

NOTES:

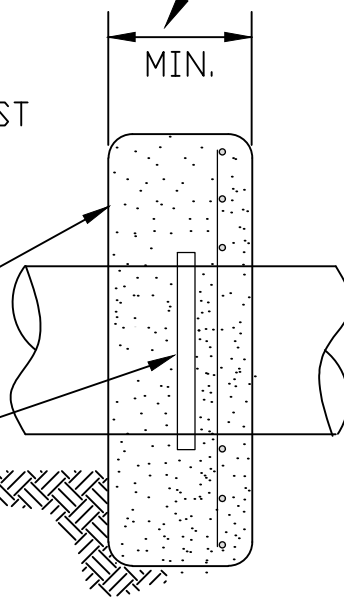
1. MINIMUM THICKNESS FOR PIPE SIZES 8" AND SMALLER IS 1'. MINIMUM THICKNESS FOR PIPE SIZE 12" OR LARGER IS 2'. THE ENGINEER SHALL SPECIFY THE THICKNESS & WIDTH FOR THE THRUST COLLAR, BUT IT MUST MEET THE MINIMUM THICKNESS NOTED HERE.

SEE NOTE #1

MINIMUM 3000 PSI CONCRETE.

SPLIT MEGA-LUG

TRENCH BOTTOM



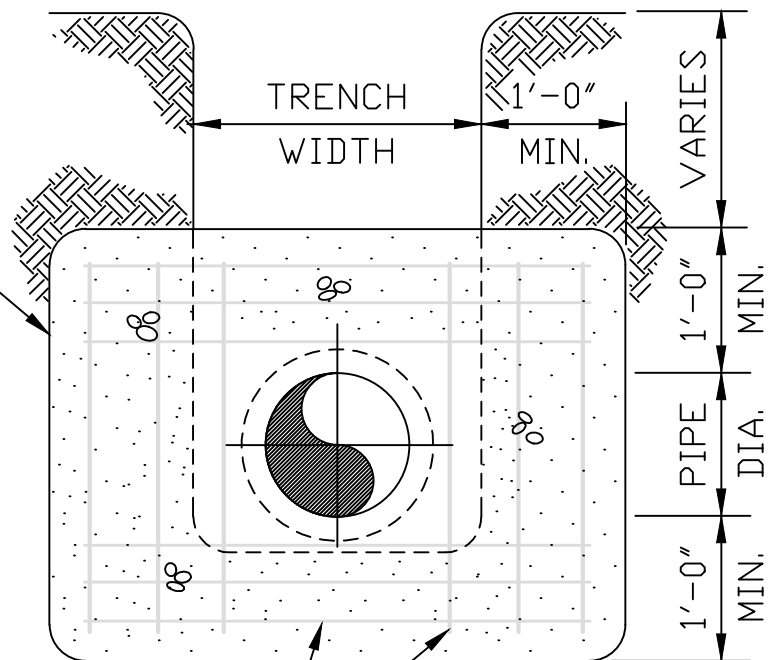
ELEVATION

UNDISTURBED MATERIAL ALL AROUND.

TYPICAL CONCRETE THRUST COLLAR, MIN. OF 12" INTO UNDISTURBED SOIL.

RESTRAINED JOINT PIPE MAY BE USED IN PLACE OF THRUST COLLAR. THE FOOTAGE OF PIPE/NUMBER OF JOINTS TO BE RESTRAINED SHALL BE SPECIFIED BY THE DESIGN ENGINEER.

SHALL BE AS DESIGNED BY AN ENGINEER.



#5 REBAR REINFORCING

CITY OF SALISBURY, N.C. STANDARD DETAIL

DATE: JANUARY 1, 1991
AMENDED: JULY 19, 2022

WATER SYSTEMS
THRUST COLLAR

NOT TO SCALE
STANDARD W-2