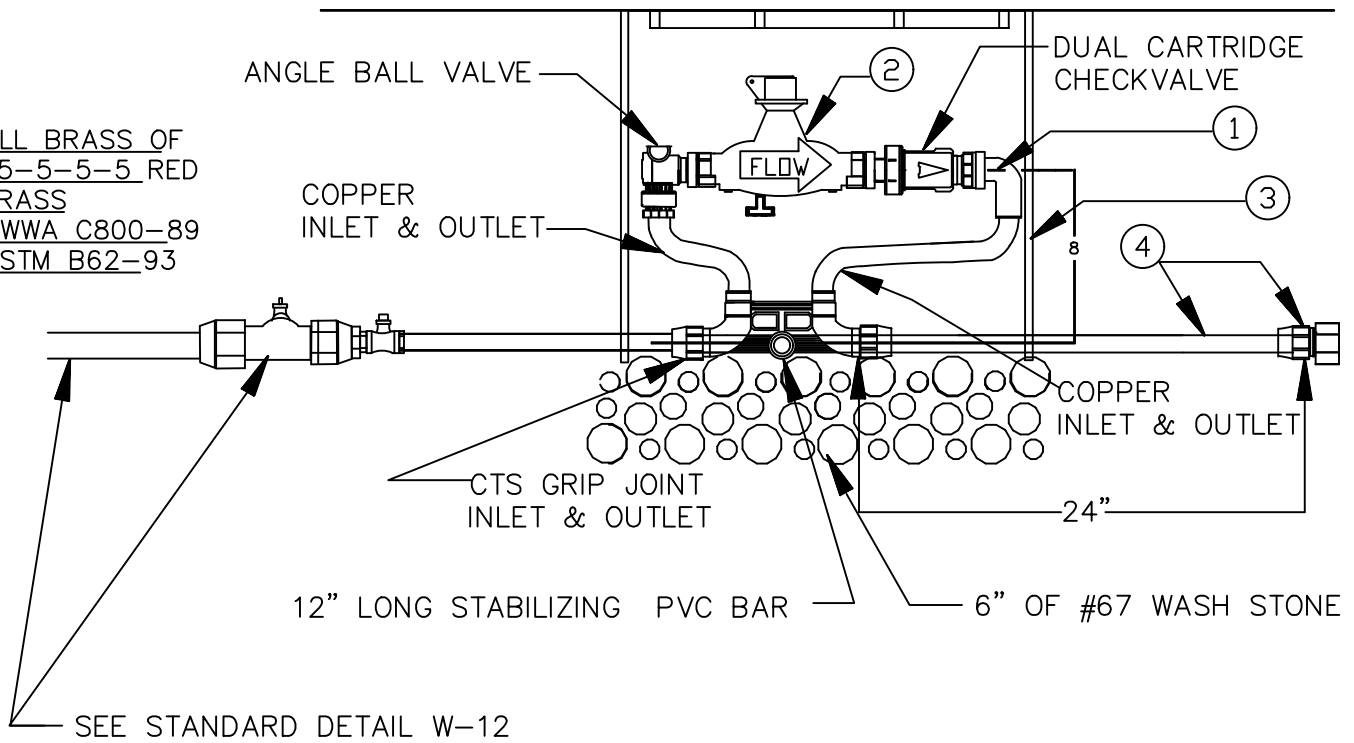


ALL BRASS OF
85-5-5-5 RED
BRASS
AWWA C800-89
ASTM B62-93



- ① METER SETTER - INLET: COPPERTUBE PACK JOINT/OUTLET COPPERTUBE PACK JOINT - SEE CURRENT APPROVED PRODUCT MANUFACTURERS SHEET FOR APPROVED TYPES (APPENDIX A)
- ② METER - TO BE INSTALLED BY THE CITY
- ③ METER BOX- SEE CURRENT APPROVED PRODUCT MANUFACTURERS SHEET FOR APPROVED TYPES. (APPENDIX A)
- ④ 24" OF COPPER W/BE USED FOR TAIL PIPE AND FIP x CTPJ W/BE PROVIDED FOR CONNECTION
- ⑤ ALL ITEMS AS SPECIFIED OR APPROVED EQUAL (DOMESTIC MANUFACTURED ONLY)
- ⑥ METER BOXES SHALL NOT BE LOCATED IN DRIVEWAYS OR DESIGNATED PARKING SPACES.
- ⑦ SEE STANDARD DETAIL W-12 FOR METER BOX LOCATION. IN AREAS WHERE SIDEWALKS ARE NOT REQUIRED THE BACK OF THE METER BOX SHALL BE LOCATED AT THE PROPERTY LINE.

CITY OF SALISBURY, N.C. STANDARD DETAIL

DATE: OCTOBER 17, 2006
AMENDED: MAY 19, 2009

WATER SYSTEMS
3/4" & 1" METER DETAIL

NOT TO SCALE

STANDARD W-9