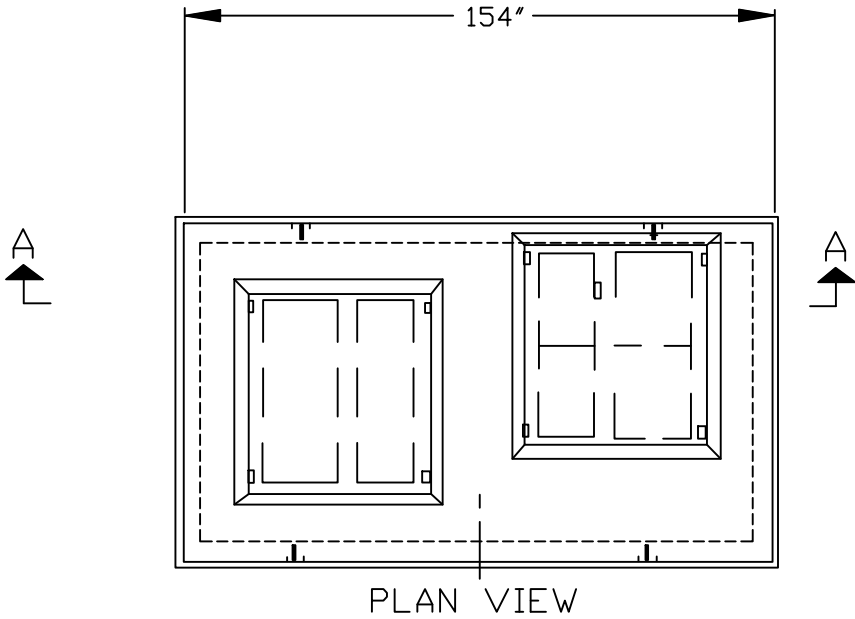


NOTES:

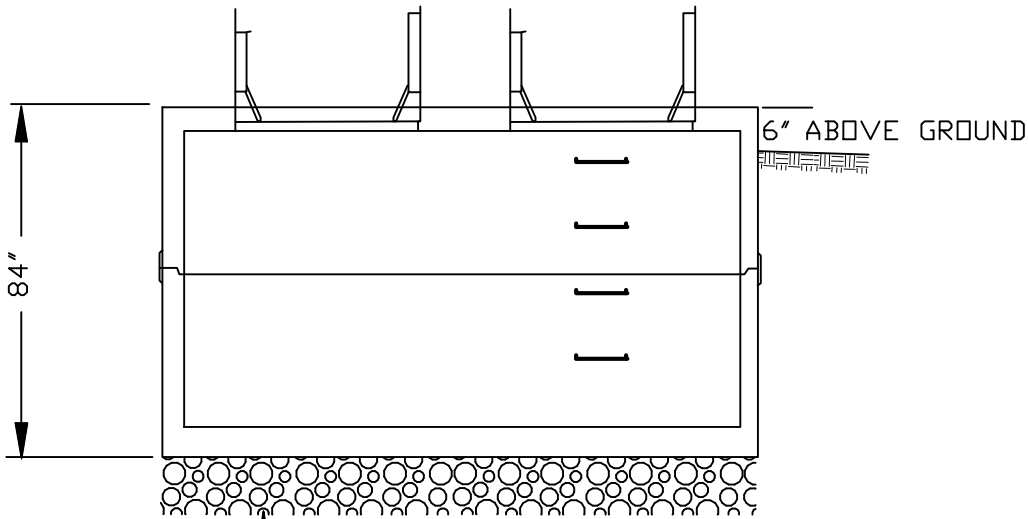
VAULTS SHALL BE INSTALLED BY THE CITY OR THE CITY'S CONTRACTOR.

33" TOP  
 WT: 10,900 LBS.  
 5.45 TONS  
 2.69 CY CONC.

39" BASE  
 WT: 14,500 LBS.  
 7.25 TONS  
 3.58 CY CONC.



PLAN VIEW



SECTION A-A

CITY OF SALISBURY, N.C.

STANDARD DETAIL

DATE: MAY 19, 2009

WATER SYSTEMS

NOT TO SCALE

6' X 12' X 6' ID VAULT

STANDARD

W-8B