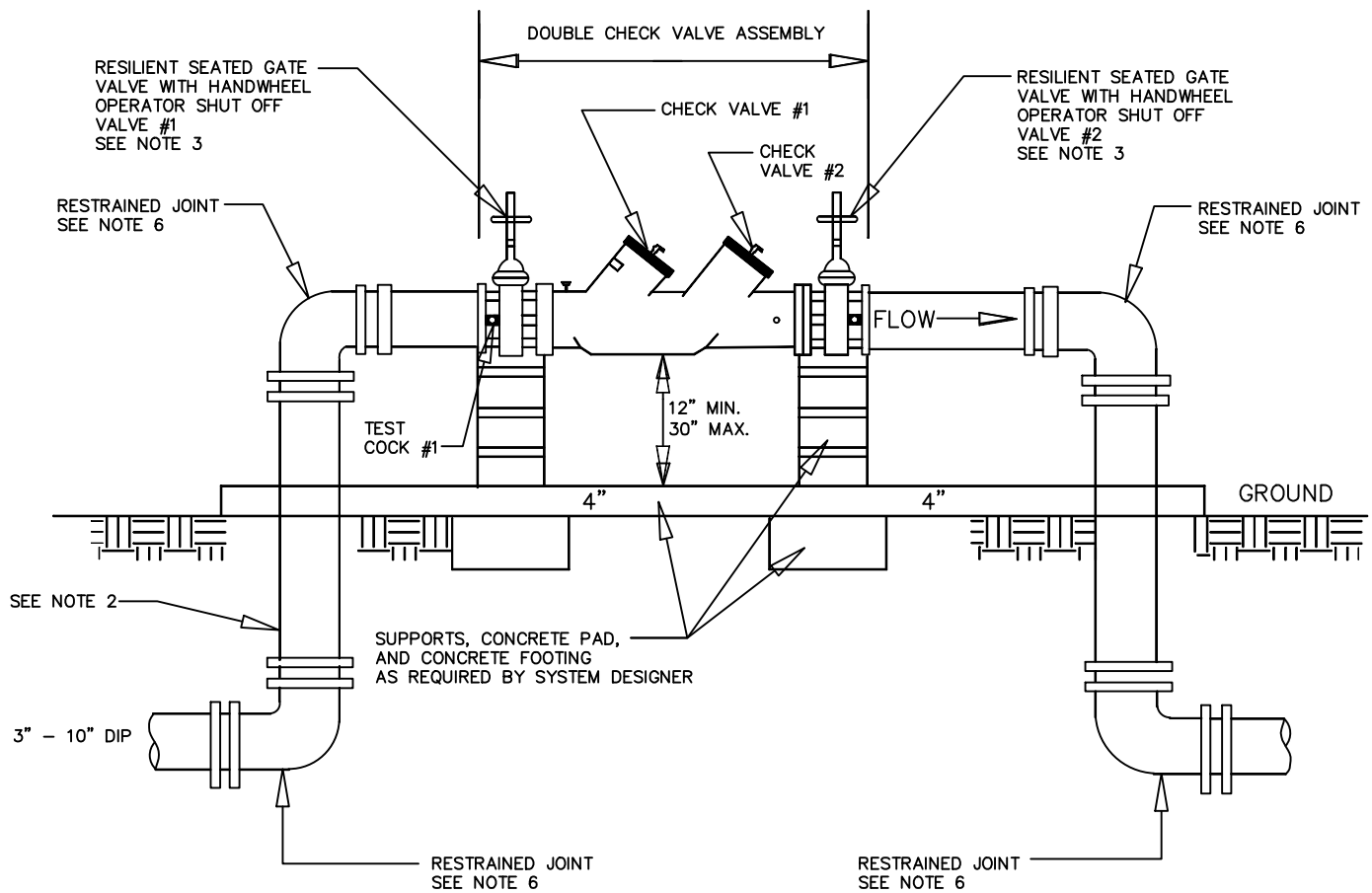


# DOUBLE CHECK VALVE ASSEMBLY (DCVA) (3" - 10") ABOVE GROUND



**NOTES:**

1. DOUBLE CHECK VALVE ASSEMBLIES (DCVA) MUST CONFORM TO SALISBURY-ROWAN UTILITIES SPECIFICATIONS.
2. (BACKFLOW ASSEMBLY MUST BE INSTALLED BEFORE SERVICE LINE IS CONNECTED TO ANY OTHER PIPES, EXCEPT AS AUTHORIZED BY THE WATER PURVEYOR.) WATER LINE MUST BE EXPOSED FOR INSPECTION FROM METER TO BACKFLOW PREVENTER.
3. THE SALISBURY-ROWAN UTILITIES APPROVED DCVA INCLUDES SHUT OFF VALVES #1 AND #2 AS PART OF THE ASSEMBLY. NO SUBSTITUTIONS SHALL BE PERMITTED.
4. TEST COCK #1 SHALL BE UPSTREAM OF SHUT OFF VALVE #1 AND IS PART OF THE APPROVED ASSEMBLY.
5. DCVA SHALL BE SUPPORTED.
6. ALL PIPING AND FITTINGS ABOVE GROUND SHALL BE FLANGED INCLUDING DOUBLE CHECK. ALL FITTINGS BELOW GROUND MUST BE MECHANICAL JOINT WITH MEGA LUG RESTRAINTS OR APPROVED EQUAL.
7. OUTDOOR INSTALLATION SHALL HAVE A PROTECTIVE COVERING (ASSE 1060) AS SPECIFIED IN SALISBURY-ROWAN UTILITIES SPECIFICATIONS FOR INSTALLATION OF BACKFLOW PREVENTION ASSEMBLIES.

CITY OF SALISBURY, N.C.      STANDARD DETAIL	DATE:      OCTOBER 17, 2006 AMENDED:      FEBRUARY 3, 2009
STANDARD DETAIL BACKFLOW PREVENTION 3" - 10" DCVA ABOVE GROUND	NOT TO SCALE STANDARD                      BF-9