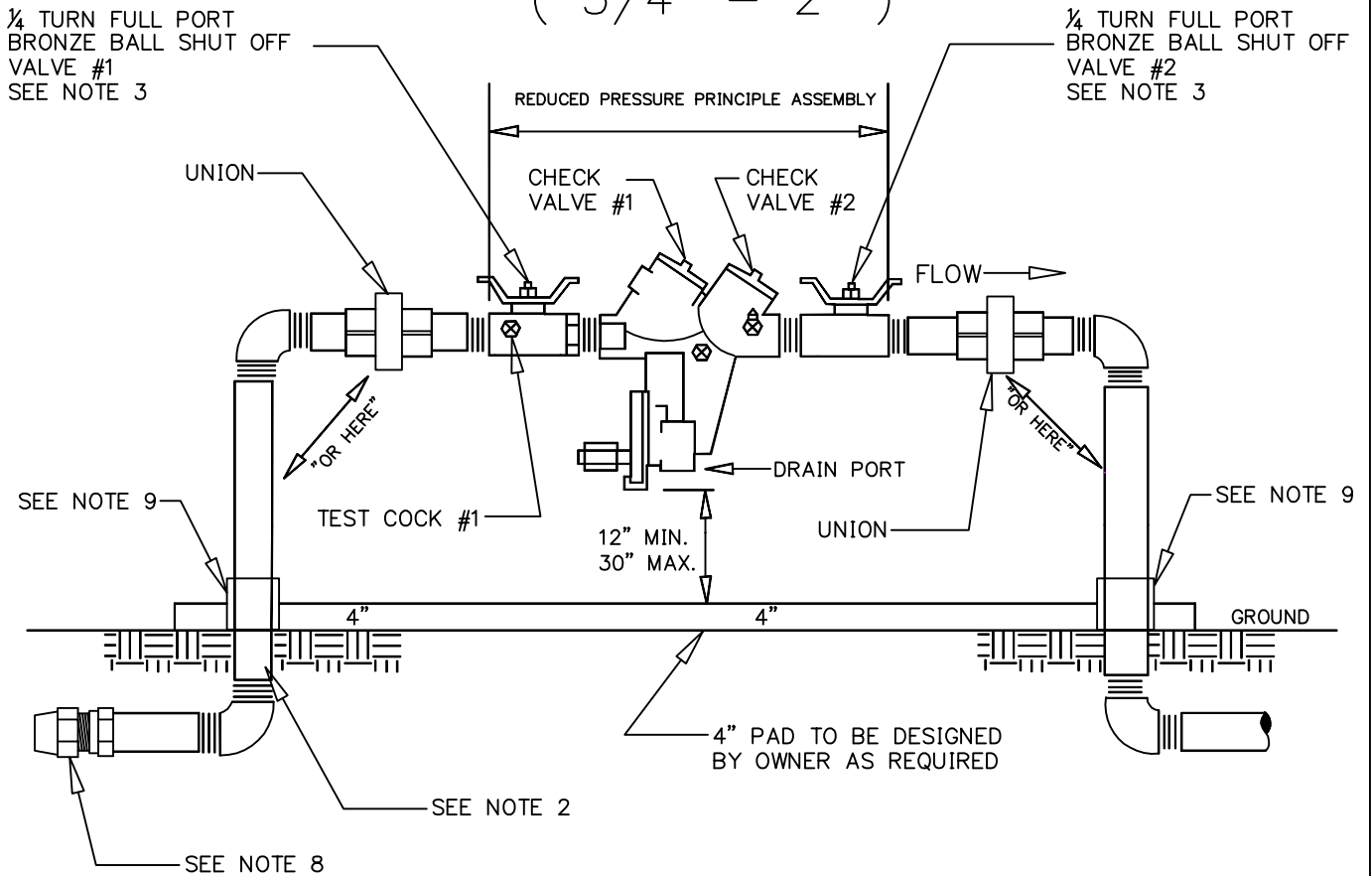


REDUCED PRESSURE PRINCIPLE ASSEMBLY (RP) (3/4" - 2")



NOTES:

1. REDUCED PRESSURE PRINCIPLE ASSEMBLIES (RP) MUST CONFORM TO SALISBURY-ROWAN UTILITIES BACKFLOW PREVENTION REQUIREMENTS.
2. (BACKFLOW ASSEMBLY MUST BE INSTALLED BEFORE SERVICE LINE IS CONNECTED TO ANY OTHER PIPES, EXCEPT AS AUTHORIZED BY THE WATER PURVEYOR.) WATER LINE MUST BE EXPOSED FOR INSPECTION FROM METER TO BACKFLOW PREVENTER.
3. THE SALISBURY-ROWAN UTILITIES APPROVED 3/4" - 2" RP INCLUDES SHUT OFF VALVES #1 AND #2 AS PART OF THE ASSEMBLY. NO SUBSTITUTIONS SHALL BE PERMITTED.
4. TEST COCK #1 SHALL BE UPSTREAM OF SHUT OFF VALVE #1 AND IS PART OF THE APPROVED ASSEMBLY.
5. FIRE LINE BACKFLOW PREVENTER ASSEMBLY SHALL HAVE HEAT & TAMPER SWITCHES WITHIN THE PROTECTIVE ENCLOSURE.
6. NO STRAINER IS ALLOWED ON A BACKFLOW PREVENTION ASSEMBLY FOR A FIRE LINE SERVICE.
7. OUTDOOR INSTALLATION SHALL HAVE A PROTECTIVE COVERING (ASSE 1060) WITH DRAIN PORT AS SPECIFIED IN SALISBURY-ROWAN UTILITIES SPECIFICATIONS FOR INSTALLATION OF BACKFLOW PREVENTION ASSEMBLIES.
8. CONNECTION TO CITY'S FITTING SHALL NOT BE UNDER CONCRETE PAD.
9. APPROVED PIPE MATERIAL USED, SUBJECT TO CORROSION; SHALL BE PROTECTED ACCORDING TO NORTH CAROLINA STATE BUILDING CODE - VOLUME II PLUMBING.

CITY OF SALISBURY, N.C.	STANDARD DETAIL	DATE: OCTOBER 17, 2006
		AMMENDED: FEBRUARY 3, 2009
STANDARD DETAIL BACKFLOW PREVENTION RP 3/4" - 2"		NOT TO SCALE
		STANDARD BF-1