

NOTES:

VAULTS SHALL BE INSTALLED BY THE CITY OR THE CITY'S CONTRACTOR.

33" TOP

WT: 14,138 LBS.

7.01 TONS

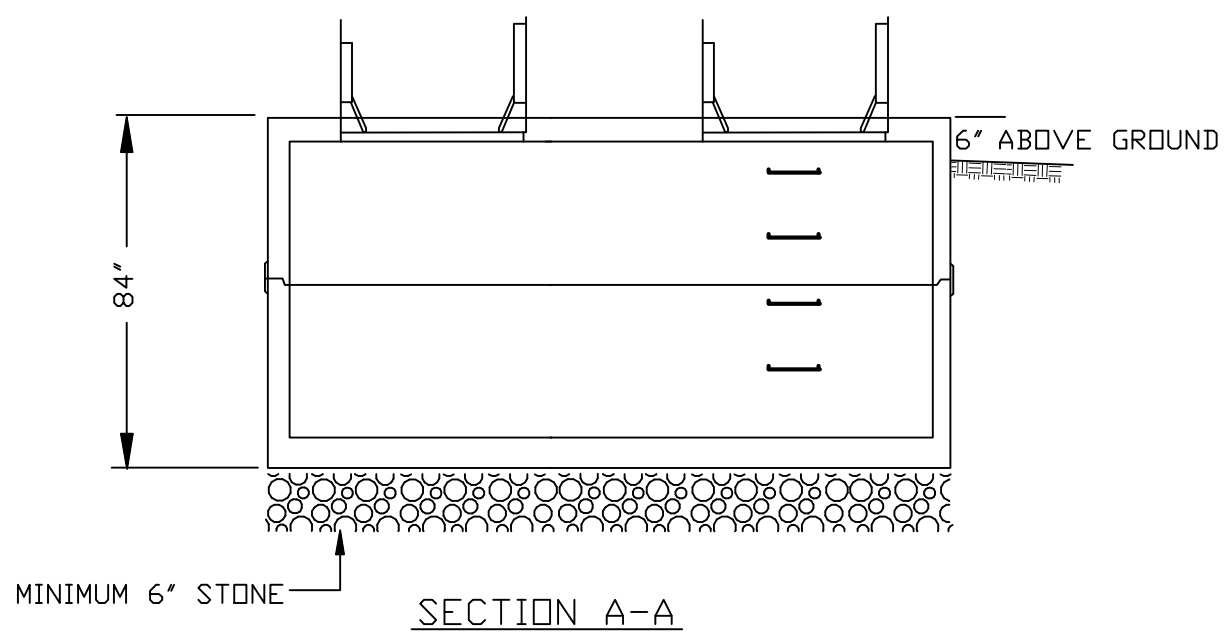
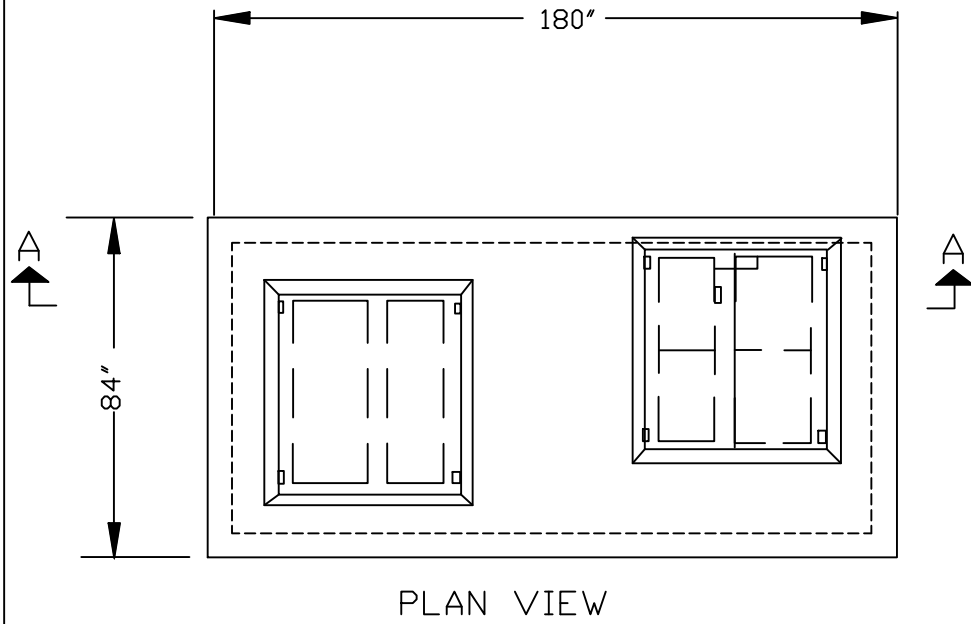
3.49 CY CONC.

39" BASE

WT: 18,014 LBS.

9.01 TONS

4.45 CY CONC.



CITY OF SALISBURY, N.C.	STANDARD DETAIL	DATE: MAY 19, 2009
WATER SYSTEMS		NOT TO SCALE
6' X 14' X 6' ID VAULT		STANDARD W-8C