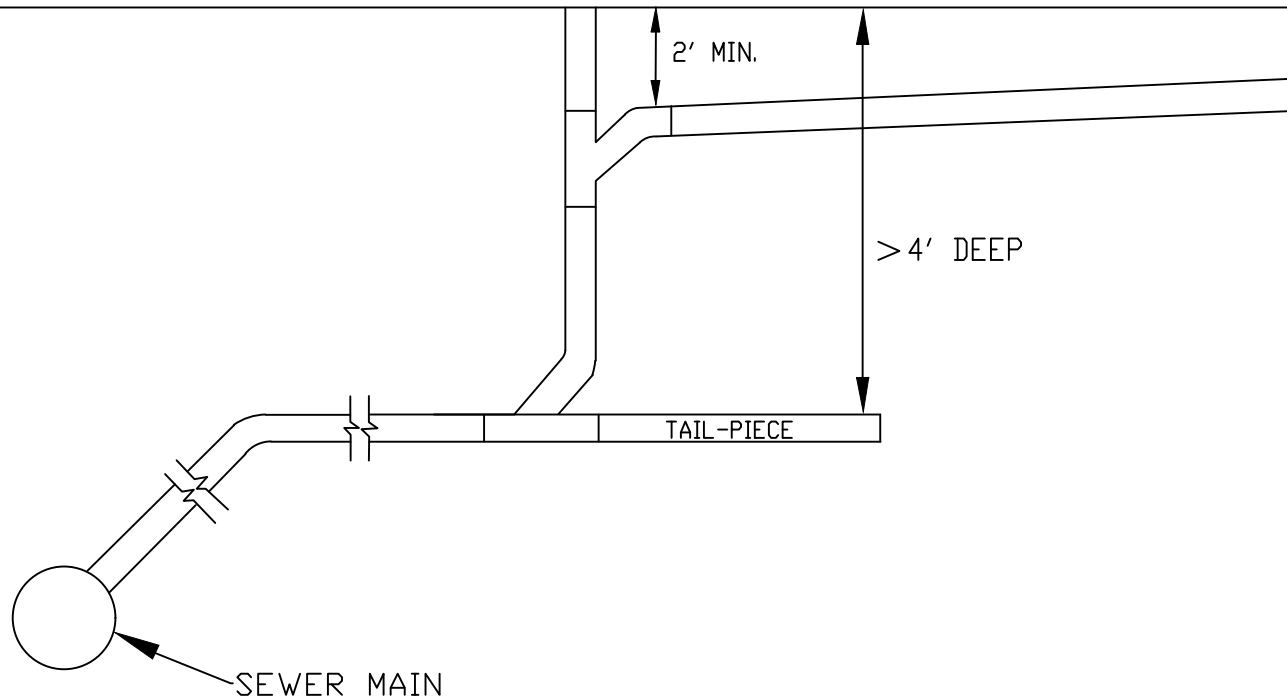


SEWER LATERAL STACK TIE-IN FOR USE ON INFILL DEVELOPEMENT ONLY

FINAL OR PROPOSED GRADE/ELEVATION MUST BE USED FOR MINIMUM AND MAXIMUM DEPTH REQUIREMENTS.



NOTES :

- (1) PLUMBERS MAY TIE INTO THE LATERAL STACK ONLY IF TAIL-PIECE IS GREATER THAN 4' DEEP.
- (2) MUST USE A SWEEP TO TIE INTO THE LATERAL STACK (TEES NOT ALLOWED).
- (3) THE TIE-IN TO THE STACK MUST BE A MINIMUM OF 2' BELOW GRADE.

CITY OF SALISBURY, N.C. STANDARD DETAIL

DATE: JULY 19, 2022

STANDARD DETAIL SEWER LATERAL STACK TIE-IN

NOT TO SCALE

STANDARD SS-5A